

## **From theory to reality: establishing a successful kidney genetics clinic in the outpatient setting**

Andrew L Lundquist<sup>1\*</sup>, Renee C Pelletier<sup>2\*</sup>, Courtney E Leonard<sup>2</sup>, Winfred W Williams<sup>1</sup>, Katrina A Armstrong<sup>3</sup>, Heidi L Rehm<sup>2,4,5</sup>, Eugene P Rhee<sup>1</sup>

\*These two authors contributed equally to this work

<sup>1</sup>Division of Nephrology, Department of Medicine, Massachusetts General Hospital, Boston, MA

<sup>2</sup>Center for Genomic Medicine, Massachusetts General Hospital, Boston, MA

<sup>3</sup>Department of Medicine, Massachusetts General Hospital, Boston, MA

<sup>4</sup>Medical and Population Genetics, Broad Institute of MIT and Harvard, Cambridge, MA

<sup>5</sup>Department of Pathology, Harvard Medical School, Boston, MA

Corresponding author: Andrew Lundquist, MD, PhD, [alundquist@mgh.harvard.edu](mailto:alundquist@mgh.harvard.edu), Division of Nephrology, Department of Medicine, Massachusetts General Hospital, 165 Cambridge Street, Suite 302, Boston, MA 02114, Tel: 617-620-7358, Fax: 617-724-1122

## **ABSTRACT**

**Background** Genetic testing in nephrology is increasingly described in the literature and several groups have suggested significant clinical benefit. However, studies to date have described experience from established genetic testing centers or from externally funded research programs.

**Methods** We established a *de novo* kidney genetics clinic within an academic adult general nephrology practice. Key features of this effort included a pipeline for internal referrals, flexible scheduling, close coordination between the nephrologist and a genetic counselor, and utilization of commercial panel based testing. Over the first year, we examined the outcomes of genetic testing, the time to return of genetic testing, and out of pocket cost to patients.

**Results** Thirty patients were referred and 23 were evaluated over the course of 5 clinic sessions. Nineteen patients underwent genetic testing with new diagnoses in 9 patients (47%), inconclusive results in 3 patients (16%) and clearance for kidney donation in 2 patients (11%). On average, return of genetic results occurred 55 days (range 9 to 174 days) from the day of sample submission and the average out of pocket cost to patients was \$155 (range \$0 to \$1623).

**Conclusions** We established a kidney genetics clinic, without a pre-existing genetics infrastructure or dedicated research funding, that identified a new diagnosis in approximately 50% of patients tested. This study provides a clinical practice model for successfully incorporating genetic testing into ambulatory nephrology care with minimal capital investment and limited financial impact on patients.

## INTRODUCTION

Genetic testing is increasingly available in medicine as a result of advances in sequencing technology and diminishing cost. Several recent studies have suggested a significant benefit for genetic testing in nephrology, with results leading to novel diagnoses, changes in disease management and preparation for renal transplant. In these initial studies, genetic testing yielded a diagnosis in ~10% of the general adult CKD population and in ~40-60% of patients with a family history suggestive of inherited kidney disease.(1-4) There is a call to make genetic testing more routine in outpatient nephrology clinics, (5, 6) however the initial studies were from programs with established genetic testing centers with associated research funding.(1-4, 7-9)

In order for genetic testing to truly take hold in nephrology, genetic testing capabilities and utilization need to be distributed more broadly. Barriers to the establishment of more widespread kidney genetics clinics include the perceived need for significant capital investment, concern regarding cost to the patient, administrative time dealing with insurance companies, and access to genetic counselors.(6, 10-13) To address these concerns and to provide a blueprint for clinic development, we initiated a *de novo* outpatient kidney genetics clinic within an academic adult general nephrology practice and monitored its impact over one year.

## **METHODS**

We identified the following criteria as necessary for a successful kidney genetics clinic:

- Genetic testing could result in clinical benefit for the patient or a family member
- The cost of the testing is reasonable for the patient
- Minimal administrative effort is required to obtain the testing
- Results are returned in an efficient manner
- Interpretation is provided by the physician
- Genetic counseling is available when needed

The key components of the clinic included a supportive administration, a physician with an interest in inherited kidney disease, and a part time genetic counselor whose administrative efforts were later transitioned to a genetic counseling assistant. Referrals to the clinic were primarily made internally from the MGH general adult nephrology practice, an academic practice comprised of two full-time clinical nephrologists and twelve part-time nephrologists. Additional referrals were made from other regional nephrology practices, the MGH kidney transplant program, and the MGH pathology department. Retrospective review of the demographic and clinical data in this study was approved by the Massachusetts General Hospital (MGH) Institutional Review Board (IRB 2020P002464). The study adheres to the Declaration of Helsinki and informed consent was waived by the IRB for all patients. Explicit consent was obtained for those patients described in more detail in the discussion using the following form (<https://clinicalgenome.org/tools/consent-resources/one-page-consent-form>).(14)

Physician oversight: a single nephrologist with an interest, but no formal training, in genetic kidney disease coordinated the clinic. The time commitment consisted of administrative efforts to initiate and advertise the clinic, correspondence with local nephrologists regarding potential cases, five half day clinics over the year and follow up with patients based on the results of the testing.

Part time genetic counselor: a genetic counselor, contributed from a small team within the MGH Department of Medicine tasked with helping clinics integrate genomic medicine approaches, joined the clinics on a part time basis. The genetic counselor facilitated consent for genetic testing, acted as a liaison with the commercial testing agency for sample submission and cost assessment, functioned as a valuable resource for interpretation of results, and provided genetic counseling and coordination of care for actionable results. The total estimated effort from the genetic counselor in the first year was 10%, with more effort in the first half of the year.

Genetic counseling assistant: in the second half of the year, the clinic transitioned many of the administrative roles taken on by the genetic counselor to a genetic counseling assistant. Genetic counseling assistants have the potential to address the high demand for genetic counselors through task sharing to allow genetic counselors to focus on higher level activities.(15, 16) In this case, the genetic counseling assistant facilitated test requisitions, sample submission, and coordination of payment for the commercial testing.

Clinic structure: a dedicated half-day clinic session focused on genetic testing occurred once every two to three months (Figure 1). The clinics were conducted in the same physical space as the general nephrology practice, with sessions scheduled on a rolling

basis to ensure that at least 4-5 patients would be evaluated per session. The cases were reviewed prior to the visit by both the physician and the genetic counselor to determine 1) the potential utility of genetic testing and 2) the best testing platform. The clinic was structured to be inclusive and referring physicians were encouraged to refer any adult patient they felt might benefit from genetic testing. Patients were scheduled if there was a known family history of kidney disease, a young age at presentation, an unexplained nephropathy, cystic disease or electrolyte disorder, or if the patient had a personal preference to be seen. If initial review suggested a low likelihood of a genetic disorder, the nephrologist reached out to the referring physician to discuss further.

Genetic testing: we pursued phenotype driven panel testing or focused exome panel testing based on the patient's clinical presentation. Though there are a number of commercial testing platforms, our tests were sent to two sites: one with multiple pre-curated diagnostic panels based on phenotype (Blueprint Genetics, Helsinki, Finland) and a second that allowed designer panels with results on up to 150 genes based on an exome platform (XomeDxSlice, GeneDx, Gaithersburg, MD). During the patient visit, a blood sample was collected and submitted for commercial testing after obtaining informed consent. The prior authorization process for testing coverage was performed independently between the testing company and the patient's insurance. Testing proceeded if there was no cost to the patient. For cases where there was an estimated cost to the patient, testing was placed on hold until this cost had been discussed with the patient and a decision was made whether or not to proceed. Pathogenicity of variants was determined by the commercial vendor upon review of known variants, genetic conservation, and prediction of changes to protein structure. In cases where novel

variants were identified and classified as variants of uncertain significance (VUS), the clinic coordinated segregation analyses of additional affected and unaffected family members to clarify pathogenicity.

Return of genetic testing results: the genetic counselor and physician initially discussed the outcome of the testing to determine the next steps needed to complete the evaluation. The physician communicated the results to the patients, initially by phone, then in a follow up visit in person to review the results. Additional genetic counseling, local or at this institution, was arranged when needed.

## RESULTS

Thirty patients were referred to the clinic during the first year, 19 from the MGH general nephrology practice, 6 from local nephrology practices, 3 from the MGH kidney transplant program and 1 from the MGH pathology department (Figure 1). None of the patients had a prior genetic diagnosis. After initial case review, it was determined that three of these patients were not appropriate for genetic testing based on a perceived low likelihood of a genetic disorder and four patients have yet to present to the clinic. Of the 23 patients seen in clinic, 10 were male and 13 were female, with an average age of 43.5 years and a range of 25 to 76 years. Most patients were unrelated, except for 3 patients from one family. Nineteen patients underwent genetic testing, 12 by GeneDx and 7 by Blueprint Genetics, while four have yet to undergo testing due to cost.

The average cost to the patients who underwent genetic testing was \$155 with a range of \$0 to \$1623. Twelve of the nineteen patients tested did not have any out of pocket cost (\$0). On average, test results returned in 55 days from the day of sample submission, with a range of 9 to 174 days. Testing in two patients took notably longer than all other patients (140 and 174 days) due to difficulty making contact with one patient and patient driven cancellation of testing, then re-initiation months later with a new insurance plan in the other. Excluding these two patients, the average time between sample submission and report date was 42 days. The average time to return of results once testing was initiated at the commercial facility was 25 days, thus it took an average of 17 days to coordinate insurance coverage or out of pocket payment prior to the initiation of testing.



Overall outcomes of genetic testing in the first year are shown in Figure 2. A new diagnosis was established in nine out of the nineteen patients tested (47%). Cost and testing results for the patients with new diagnoses are shown in Table 1. New diagnoses included two patients with Gitelman syndrome, two patients with autosomal dominant interstitial kidney disease, and one patient each with Alport syndrome, thin basement membrane nephropathy/Alport syndrome spectrum, polycystic kidney disease, hypomagnesemia due to a 17q12 microdeletion syndrome including *HNF1B* and FSGS secondary to a mitochondrial cytopathy. Novel variants were identified in *UMOD* and in *COL4A4*. Longitudinal follow up of the patient with the *COL4A4* variant and additional screening of affected family members is necessary to refine the diagnosis of thin basement membrane nephropathy versus autosomal dominant Alport syndrome.

Three of the nineteen patients tested (16%) had inconclusive results, either with a VUS or a single heterozygous variant in a recessive disease gene (Table 2). In each case, the variant identified correlated with the phenotype, but either did not meet criteria to be classified as pathogenic or a variant on the second allele was not identified. Patient 10 was referred for polyuria, HTN and hypokalemia, with a family history of HTN and hypokalemia. A heterozygous VUS was found in the *CACNA1D* gene, in which pathologic variants are associated with primary hyperaldosteronism.(17, 18) Patient 11 was referred for hypophosphatemia and nephrolithiasis. A likely pathogenic duplication in *CYP24A1* was identified. Biallelic variants in this gene lead to infantile hypercalcemia,(19, 20) while monoallelic findings can result in kidney stone formation.(21-23) Patient 12 was referred with a history of biopsy proven FSGS. Genetic testing revealed a VUS in the *NPHS2*

gene.(24, 25) Testing of additional affected family members in each of these three cases may help clarify the significance of these initial genetic findings.

Two of the nineteen patients tested (11%) were potential kidney donors, one a sibling in the family with the newly identified uromodulin variant and the other with a family history of nephrolithiasis. Genetic testing was negative in both potential donors, facilitating future donation. The results of the five remaining patients with negative testing (26%) are shown in Table 3. Four of these patients were felt to have a low to moderate probability of finding a genetic variant and no further testing is planned, while one patient with a strong family history of early onset hypertension and will undergo follow up whole exome sequencing (WES).

## **DISCUSSION:**

Our experience in the first year of a kidney genetics clinic is consistent with recent studies that demonstrate the potential clinical benefit of genetic testing in outpatient nephrology.(1, 2, 4) We were able to start a successful *de novo* genetics clinic within the framework of an existing academic adult nephrology practice with minimal capital investment and without a pre-existing testing platform or dedicated research funding. As this was a pilot project without significant advertising, only 30 patients were referred in the first year. We have subsequently experienced an increase in referrals with increased awareness of the clinic. A part-time genetic counselor was an essential part of the clinic, counseling patients and serving as a liaison with the testing laboratory for sample coordination and insurance coverage. Half way through the year the majority of the administrative responsibilities were transitioned to a genetic counseling assistant.

Commercial gene panel testing based on phenotype resulted in a new diagnosis in approximately 50% of patients tested in our clinic, comparable to studies using whole exome testing.(1) Recent studies show that insurance coverage for WES remains limited in adult patients (26) with cost more than double that of panel testing. (27) We chose panel-based testing as an initial strategy to reduce cost and to expedite results. This approach also minimized the likelihood of secondary or incidental findings such as BRCA variants, as only the genes included in the panels were analyzed and reported, even in the exome based panels. Using this strategy, cost to the patient was not prohibitive as twelve out of nineteen patients tested had no out of pocket cost and the average cost in all patients tested was \$155. It remains difficult to predict which patients will receive coverage and there is variability in preferred or accepted insurance carriers across

different commercial testing providers. Regardless, the average time to acquire prior authorization or negotiate out of pocket cost to the patient prior to initiation of testing in this study was only 17 days.

When testing was not covered by insurance, the maximum out of pocket cost for patients varied across commercial testing platforms. The maximum out of pocket cost for the designer gene panel based on the exome platform was \$2,000, compared to a maximum cost of \$250 using standard or non-exome based gene panels. When out of pocket cost was prohibitive for exome based panel testing, several patients were willing and able to pay \$250 out of pocket to proceed with standard panel based testing. In our experience, the non-exome based panels were both cost efficient and effective, while the exome based panels came at an increased cost, but offered designer capability when required. Recent studies have shown that WES may increase the yield of panel-based testing (28), and accordingly one out of nineteen patients in this study will undergo follow up WES. Outside of the research setting, we believe that initial screening with more affordable and focused panel-based testing, followed by more comprehensive WES in patients with a strong family history of disease and negative panel testing is an effective approach. Accurate phenotyping, a positive family history or unexplained kidney disease, and presentation at a young age are all characteristics that may help reduce negative test results and overall cost.

In addition to diagnostic benefit, test results affected clinical management in multiple patients. For patient 8, the genetic diagnosis impacted the patient's understanding of her condition and her subsequent health care decision-making. She had a history of seizures, bipolar disorder, and long term muscle weakness and presented for

evaluation of persistent and severe hypomagnesemia in the setting of presumed Gitelman syndrome. Testing revealed the 17q12 microdeletion syndrome, a 1.3 Mb deletion of 15 genes including the *HNF1B* gene, variation in which can lead to renal dysplasia and hypomagnesemia (29, 30). Prior studies have shown that this microdeletion can lead to both renal and neuropsychiatric disease, (31, 32) tying together her overall medical history. These findings were communicated to her local psychiatrist, she underwent further genetic counseling locally and she decided against having children in the future.

In a second patient, the diagnosis affected the referring physician's treatment approach. Patient 9 was referred in the setting of biopsy proven FSGS, proteinuria, CKD3, HTN and hearing loss in young adulthood. Her mother has ESRD, diabetes, and stroke at a young age and she has a sister with hearing loss. Genetic testing revealed a heteroplasmic pathogenic *MT-TL1* variant A3243G, previously shown to result in mitochondrial myopathy, encephalopathy, lactic acidosis, and stroke like episodes (MELAS) (33) with variable additional phenotypes including FSGS, renal failure and hearing loss. (34, 35) The characterization of a familial mitochondrial cytopathy will have significant clinical impact on both the patient and her family members, including audiologic evaluation and management, cardiac testing, and avoidance of certain medications.(36) In her case, steroids will be avoided for treatment of her FSGS, additional disease specific therapies can be considered, (37) and she was referred for enrollment in clinical trials.

In a third case, the genetic diagnosis had implications for kidney transplantation. Patient 1 presented with biopsy proven interstitial nephritis and progressive stage 4 chronic kidney disease. Her sister was denied evaluation as a transplant donor as their father and a paternal aunt also had significant kidney disease of unknown etiology (Figure

3). Genetic testing revealed a novel uromodulin variant. Testing of her paternal aunt, currently on dialysis, revealed the same variant while the variant was absent in her sister, facilitating her evaluation as a future kidney donor. Taken together, these three examples show that genetic testing in nephrology can be useful both for diagnosis and clinical management.

There were some limitations to the generalizability of this strategy. First, the majority of our patients were referred from within Massachusetts, where the rate of health insurance coverage is high. The cost of genetic testing is decreasing, though widespread testing may remain cost prohibitive for some individuals in other parts of the United States or internationally, and efforts to assure access to thorough and equal testing for patients of all socioeconomic status and ethnicities are necessary. Further, we were initially afforded a 10% effort from a genetic counselor and subsequently a 5% effort from a genetic counseling assistant as part of an effort to integrate genomics into clinical medicine by the Department of Medicine at MGH. These resources may not be available at all institutions, but these experiences underscore the successful use of a shared and centrally hired genetic counselor, as opposed to hiring a full time genetic counselor for each clinic. With limited genetic counseling resources nationwide, we demonstrate a new approach for service delivery of genetic counseling which can serve as a model for improving access to genetics services in other clinics and institutions.

In summary, we describe the first year results of a new kidney genetics clinic established within an academic adult general nephrology practice that yielded a new diagnosis in approximately 50% of patients tested with limited out of pocket cost to patients (~\$150) and a return of test results in less than two months. We hope this study

provides both motivation and a framework for additional kidney genetics clinics across the country to enhance the scope and clinical benefit of genetic testing in the field of nephrology.

## **DISCLOSURES**

All authors have nothing to disclose.

## **FUNDING**

None

## **AUTHOR CONTRIBUTIONS**

A Lundquist: Conceptualization; Data curation; Formal analysis; Methodology; Supervision; Writing - original draft; Writing - review and editing

R Pelletier: Conceptualization; Data curation; Formal analysis; Writing - review and editing

C Leonard: Formal analysis; Project administration; Writing - review and editing

K Armstrong: Conceptualization; Writing - review and editing

H Rehm: Conceptualization; Writing - review and editing

E Rhee: Conceptualization; Writing - review and editing

W Williams: Conceptualization; Writing - review and editing

## REFERENCES

1. Connaughton DM, Kennedy C, Shril S, Mann N, Murray SL, Williams PA, Conlon E, Nakayama M, van der Ven AT, Ityel H, Kause F, Kolvenbach CM, Dai R, Vivante A, Braun DA, Schneider R, Kitzler TM, Moloney B, Moran CP, Smyth JS, Kennedy A, Benson K, Stapleton C, Denton M, Magee C, O'Seaghdha CM, Plant WD, Griffin MD, Awan A, Sweeney C, Mane SM, Lifton RP, Griffin B, Leavey S, Casserly L, de Freitas DG, Holian J, Dorman A, Doyle B, Lavin PJ, Little MA, Conlon PJ, Hildebrandt F: Monogenic causes of chronic kidney disease in adults. *Kidney Int*, 95: 914-928, 2019
2. Groopman EE, Marasa M, Cameron-Christie S, Petrovski S, Aggarwal VS, Milo-Rasouly H, Li Y, Zhang J, Nestor J, Krithivasan P, Lam WY, Mitrotti A, Piva S, Kil BH, Chatterjee D, Reingold R, Bradbury D, DiVecchia M, Snyder H, Mu X, Mehl K, Balderes O, Fasel DA, Weng C, Radhakrishnan J, Canetta P, Appel GB, Bomback AS, Ahn W, Uy NS, Alam S, Cohen DJ, Crew RJ, Dube GK, Rao MK, Kamalakaran S, Copeland B, Ren Z, Bridgers J, Malone CD, Mebane CM, Dagaonkar N, Fellstrom BC, Haefliger C, Mohan S, Sanna-Cherchi S, Kiryluk K, Fleckner J, March R, Platt A, Goldstein DB, Gharavi AG: Diagnostic Utility of Exome Sequencing for Kidney Disease. *N Engl J Med*, 380: 142-151, 2019
3. Mallett AJ, McCarthy HJ, Ho G, Holman K, Farnsworth E, Patel C, Fletcher JT, Mallawaarachchi A, Quinlan C, Bennetts B, Alexander SI: Massively parallel sequencing and targeted exomes in familial kidney disease can diagnose underlying genetic disorders. *Kidney Int*, 92: 1493-1506, 2017
4. Thomas CP, Freese ME, Ounda A, Jetton JG, Holida M, Nouredine L, Smith RJ: Initial experience from a renal genetics clinic demonstrates a distinct role in patient management. *Genet Med*, 2020
5. Sampson MG, Fox CS: Introduction to Genomics of Kidney Disease: Implications, Discovery, and Translation. *Clin J Am Soc Nephrol*, 15: 267, 2020
6. Pollak MR, Friedman DJ: The Genetic Architecture of Kidney Disease. *Clin J Am Soc Nephrol*, 15: 268-275, 2020
7. Lata S, Marasa M, Li Y, Fasel DA, Groopman E, Jobanputra V, Rasouly H, Mitrotti A, Westland R, Verbitsky M, Nestor J, Slater LM, D'Agati V, Zaniew M, Materna-Kiryluk A, Lugani F, Caridi G, Rampoldi L, Mattoo A, Newton CA, Rao MK, Radhakrishnan J, Ahn W, Canetta PA, Bomback AS, Appel GB, Antignac C, Markowitz GS, Garcia CK, Kiryluk K, Sanna-Cherchi S, Gharavi AG: Whole-Exome Sequencing in Adults With Chronic Kidney Disease: A Pilot Study. *Ann Intern Med*, 168: 100-109, 2018
8. Mann N, Braun DA, Amann K, Tan W, Shril S, Connaughton DM, Nakayama M, Schneider R, Kitzler TM, van der Ven AT, Chen J, Ityel H, Vivante A, Majmundar AJ, Daga A, Warejko JK, Lovric S, Ashraf S, Jobst-Schwan T, Widmeier E, Hugo H, Mane SM, Spaneas L, Somers MJG, Ferguson MA, Traum AZ, Stein DR, Baum MA, Daouk GH, Lifton RP, Manzi S, Vakili K, Kim HB, Rodig NM, Hildebrandt F: Whole-Exome Sequencing Enables a Precision Medicine Approach for Kidney Transplant Recipients. *J Am Soc Nephrol*, 30: 201-215, 2019
9. Mansilla MA, Sompallae RR, Nishimura CJ, Kwitek AE, Kimble MJ, Freese ME, Campbell CA, Smith RJ, Thomas CP: Targeted broad-based genetic testing by next-generation sequencing informs diagnosis and facilitates management in patients with kidney diseases. *Nephrol Dial Transplant*, 2019
10. Groopman EE, Gharavi AG: Expanding opportunities and emerging challenges: broadening the scope of genetic testing in nephrology. *Kidney Int*, 95: 743-746, 2019
11. Kesselheim A, Ashton E, Bockenbauer D: Potential and pitfalls in the genetic diagnosis of kidney diseases. *Clin Kidney J*, 10: 581-585, 2017



12. Krier JB, Kalia SS, Green RC: Genomic sequencing in clinical practice: applications, challenges, and opportunities. *Dialogues Clin Neurosci*, 18: 299-312, 2016
13. Nestor JG, Groopman EE, Gharavi AG: Towards precision nephrology: the opportunities and challenges of genomic medicine. *J Nephrol*, 31: 47-60, 2018
14. Azzariti DR, Riggs ER, Niehaus A, Rodriguez LL, Ramos EM, Kattman B, Landrum MJ, Martin CL, Rehm HL: Points to consider for sharing variant-level information from clinical genetic testing with ClinVar. *Cold Spring Harb Mol Case Stud*, 4, 2018
15. Hnatiuk MJ, Noss R, Mitchell AL, Matthews AL: The current state of genetic counseling assistants in the United States. *J Genet Couns*, 28: 962-973, 2019
16. Pirzadeh-Miller S, Robinson LS, Read P, Ross TS: Genetic Counseling Assistants: an Integral Piece of the Evolving Genetic Counseling Service Delivery Model. *J Genet Couns*, 26: 716-727, 2017
17. Fernandes-Rosa FL, Williams TA, Riester A, Steichen O, Beuschlein F, Boulkroun S, Strom TM, Monticone S, Amar L, Meatchi T, Mantero F, Cicala MV, Quinkler M, Fallo F, Allolio B, Bernini G, Maccario M, Giacchetti G, Jeunemaitre X, Mulatero P, Reincke M, Zennaro MC: Genetic spectrum and clinical correlates of somatic mutations in aldosterone-producing adenoma. *Hypertension*, 64: 354-361, 2014
18. Scholl UI: Unanswered Questions in the Genetic Basis of Primary Aldosteronism. *Horm Metab Res*, 49: 963-968, 2017
19. Figueres ML, Linglart A, Bienaime F, Allain-Launay E, Roussey-Kessler G, Ryckewaert A, Kottler ML, Hourmant M: Kidney function and influence of sunlight exposure in patients with impaired 24-hydroxylation of vitamin D due to CYP24A1 mutations. *Am J Kidney Dis*, 65: 122-126, 2015
20. Molin A, Baudoin R, Kaufmann M, Souberbielle JC, Ryckewaert A, Vantyghem MC, Eckart P, Bacchetta J, Deschenes G, Kesler-Roussey G, Coudray N, Richard N, Wraich M, Bonafiglia Q, Tiulpakov A, Jones G, Kottler ML: CYP24A1 Mutations in a Cohort of Hypercalcemic Patients: Evidence for a Recessive Trait. *J Clin Endocrinol Metab*, 100: E1343-1352, 2015
21. Carpenter TO: CYP24A1 loss of function: Clinical phenotype of monoallelic and biallelic mutations. *J Steroid Biochem Mol Biol*, 173: 337-340, 2017
22. O'Keefe DT, Tebben PJ, Kumar R, Singh RJ, Wu Y, Wermers RA: Clinical and biochemical phenotypes of adults with monoallelic and biallelic CYP24A1 mutations: evidence of gene dose effect. *Osteoporos Int*, 27: 3121-3125, 2016
23. Tebben PJ, Singh RJ, Kumar R: Vitamin D-Mediated Hypercalcemia: Mechanisms, Diagnosis, and Treatment. *Endocr Rev*, 37: 521-547, 2016
24. Franceschini N, North KE, Kopp JB, McKenzie L, Winkler C: NPHS2 gene, nephrotic syndrome and focal segmental glomerulosclerosis: a HuGE review. *Genet Med*, 8: 63-75, 2006
25. Rood IM, Deegens JKJ, Lugtenberg D, Bongers E, Wetzels JFM: Nephrotic Syndrome With Mutations in NPHS2: The Role of R229Q and Implications for Genetic Counseling. *Am J Kidney Dis*, 73: 400-403, 2019
26. Reuter CM, Kohler JN, Bonner D, Zastrow D, Fernandez L, Dries A, Marwaha S, Davidson J, Brokamp E, Herzog M, Hong J, Macnamara E, Rosenfeld JA, Schoch K, Spillmann R, Undiagnosed Diseases N, Loscalzo J, Krier J, Stoler J, Sweetser D, Palmer CGS, Phillips JA, Shashi V, Adams DA, Yang Y, Ashley EA, Fisher PG, Mulvihill JJ, Bernstein JA, Wheeler MT: Yield of whole exome sequencing in undiagnosed patients facing insurance coverage barriers to genetic testing. *J Genet Couns*, 28: 1107-1118, 2019
27. Baldrige D, Heeley J, Vineyard M, Manwaring L, Toler TL, Fassi E, Fiala E, Brown S, Goss CW, Willing M, Grange DK, Kozel BA, Shinawi M: The Exome Clinic and the role of medical genetics expertise in the interpretation of exome sequencing results. *Genet Med*, 19: 1040-1048, 2017

28. Wilson PC, Love-Gregory L, Corliss M, McNulty S, Heusel JW, Gaut JP: Beyond Panel-based Testing: Exome analysis increases sensitivity for diagnosis of genetic kidney disease. *Kidney360*: 10.34067/KID.0001342020, 2020
29. Adalat S, Hayes WN, Bryant WA, Booth J, Woolf AS, Kleta R, Subtil S, Clissold R, Colclough K, Ellard S, Bockenhauer D: HNF1B Mutations Are Associated With a Gitelman-like Tubulopathy That Develops During Childhood. *Kidney Int Rep*, 4: 1304-1311, 2019
30. Stiles CE, Thuraisingham R, Bockenhauer D, Platts L, Kumar AV, Korbonits M: De novo HNF1 homeobox B mutation as a cause for chronic, treatment-resistant hypomagnesaemia. *Endocrinol Diabetes Metab Case Rep*, 2018, 2018
31. Clissold RL, Shaw-Smith C, Turnpenny P, Bunce B, Bockenhauer D, Kerecuk L, Waller S, Bowman P, Ford T, Ellard S, Hattersley AT, Bingham C: Chromosome 17q12 microdeletions but not intragenic HNF1B mutations link developmental kidney disease and psychiatric disorder. *Kidney Int*, 90: 203-211, 2016
32. Moreno-De-Luca D, Consortium S, Mulle JG, Simons Simplex Collection Genetics C, Kaminsky EB, Sanders SJ, GeneStar, Myers SM, Adam MP, Pakula AT, Eisenhauer NJ, Uhas K, Weik L, Guy L, Care ME, Morel CF, Boni C, Salbert BA, Chandrareddy A, Demmer LA, Chow EW, Surti U, Aradhya S, Pickering DL, Golden DM, Sanger WG, Aston E, Brothman AR, Gliem TJ, Thorland EC, Ackley T, Iyer R, Huang S, Barber JC, Crolla JA, Warren ST, Martin CL, Ledbetter DH: Deletion 17q12 is a recurrent copy number variant that confers high risk of autism and schizophrenia. *Am J Hum Genet*, 87: 618-630, 2010
33. Kurogouchi F, Oguchi T, Mawatari E, Yamaura S, Hora K, Takei M, Sekijima Y, Ikeda S, Kiyosawa K: A case of mitochondrial cytopathy with a typical point mutation for MELAS, presenting with severe focal-segmental glomerulosclerosis as main clinical manifestation. *Am J Nephrol*, 18: 551-556, 1998
34. Canadas-Garre M, Anderson K, Cappa R, Skelly R, Smyth LJ, McKnight AJ, Maxwell AP: Genetic Susceptibility to Chronic Kidney Disease - Some More Pieces for the Heritability Puzzle. *Front Genet*, 10: 453, 2019
35. Jansen JJ, Maassen JA, van der Woude FJ, Lemmink HA, van den Ouweland JM, t' Hart LM, Smeets HJ, Bruijn JA, Lemkes HH: Mutation in mitochondrial tRNA(Leu(UUR)) gene associated with progressive kidney disease. *J Am Soc Nephrol*, 8: 1118-1124, 1997
36. Parikh S, Goldstein A, Karaa A, Koenig MK, Anselm I, Brunel-Guitton C, Christodoulou J, Cohen BH, Dimmock D, Enns GM, Falk MJ, Feigenbaum A, Frye RE, Ganesh J, Griesemer D, Haas R, Horvath R, Korson M, Kruer MC, Mancuso M, McCormack S, Raboisson MJ, Reimschisel T, Salvarinova R, Saneto RP, Scaglia F, Shoffner J, Stacpoole PW, Sue CM, Tarnopolsky M, Van Karnebeek C, Wolfe LA, Cunningham ZZ, Rahman S, Chinnery PF: Patient care standards for primary mitochondrial disease: a consensus statement from the Mitochondrial Medicine Society. *Genet Med*, 19, 2017
37. Karaa A, Haas R, Goldstein A, Vockley J, Weaver WD, Cohen BH: Randomized dose-escalation trial of elamipretide in adults with primary mitochondrial myopathy. *Neurology*, 90: e1212-e1221, 2018

**Table 1. Summary of patients with new clinical diagnoses after genetic testing (N = 9)**

Patient	Family History	Cost to Patient	Diagnosis	Gene	Transcript	Genomic Coordinates (GRCh37)	Zygosity	DNA Change	Protein Change	Classification
1	Multiple	\$1,623	ADIKD	<i>UMOD</i>	NM_003361.2	16:20360507	HET	c.116C>A	p.A39D	Pathogenic
2	Multiple	\$0	ADIKD	<i>UMOD</i>	NM_003361.2	16:20360507	HET	c.116C>A	p.A39D	Pathogenic
3	Multiple	\$14	Alport	<i>COL4A5</i>	NM_033380.1	X:107939580	HEMI	c.5048G>A	p.R1683G	Pathogenic
4	Multiple	\$0	TBMN/Alport	<i>COL4A4</i>	NM_000092.4	2:227973304	HET	c.728G>A	p.G243E	Pathogenic
5	No	\$250	Gitelman	<i>SCL12A3</i>	NM_000339.2	16:56947205	COMP HET	c.2981G>A	p.C994W	Pathogenic
				<i>SCL12A3</i>	NM_000339.2	16:56903649	COMP HET	c.514T>C	p.T172R	Pathogenic
6	No	\$250	Gitelman	<i>SCL12A3</i>	NM_000339.2	16:56899381	COMP HET	c.237_238dup	p.R80Pfs*35	Pathogenic
				<i>SCL12A3</i>	NM_000339.2	16:56920278	COMP HET	c.1928C>T	p.P643L	Pathogenic
7	Multiple	\$250	PKD	<i>PKD1</i>	NM_001009944.2	16:2160152	HET	c.5014_5015del	p.A1672Gfs*98	Pathogenic
8	No	\$0	Deletion Syndrome	<i>HNF1B + other genes</i>	Multiple	17:34856055	HET	17q12 deletion	Multiple	Pathogenic
9	Multiple	\$0	Mitochondrial	<i>MT-TL1</i>	NC_012920.1	N/A	HETplas	m.3243A>G	N/A	Pathogenic

ADIKD = autosomal dominant interstitial kidney disease, TBMN: thin basement membrane nephropathy, PKD = polycystic kidney disease, HET = heterozygous, HEMI = hemizygous, COMP HET = compound heterozygote, HETplas = heteroplasmic. Cost is in US dollars.

**Table 2. Summary of patients with inconclusive results (N = 3)**

Patient	Family History	Cost to Patient	Gene	Transcript	Genomic coord. (GRCh37)	Zygoty	DNA Change	Protein Change	Classification
10	Multiple	\$0	<i>CACNA1D</i>	NM_000720.2	3:53762060	HET	c.3914C>T	p.A1305V	VUS
11	Yes	\$0	<i>CYP24A1</i>	NM_000782.4	20:52790103	HET	c.18_21dupCAAG	p.S8QfsX99	Likely Pathogenic
12	Yes	\$300	<i>NPHS2</i>	NM_014625.3	1:179526214	HET	c.686G>A	p.R229Q	VUS

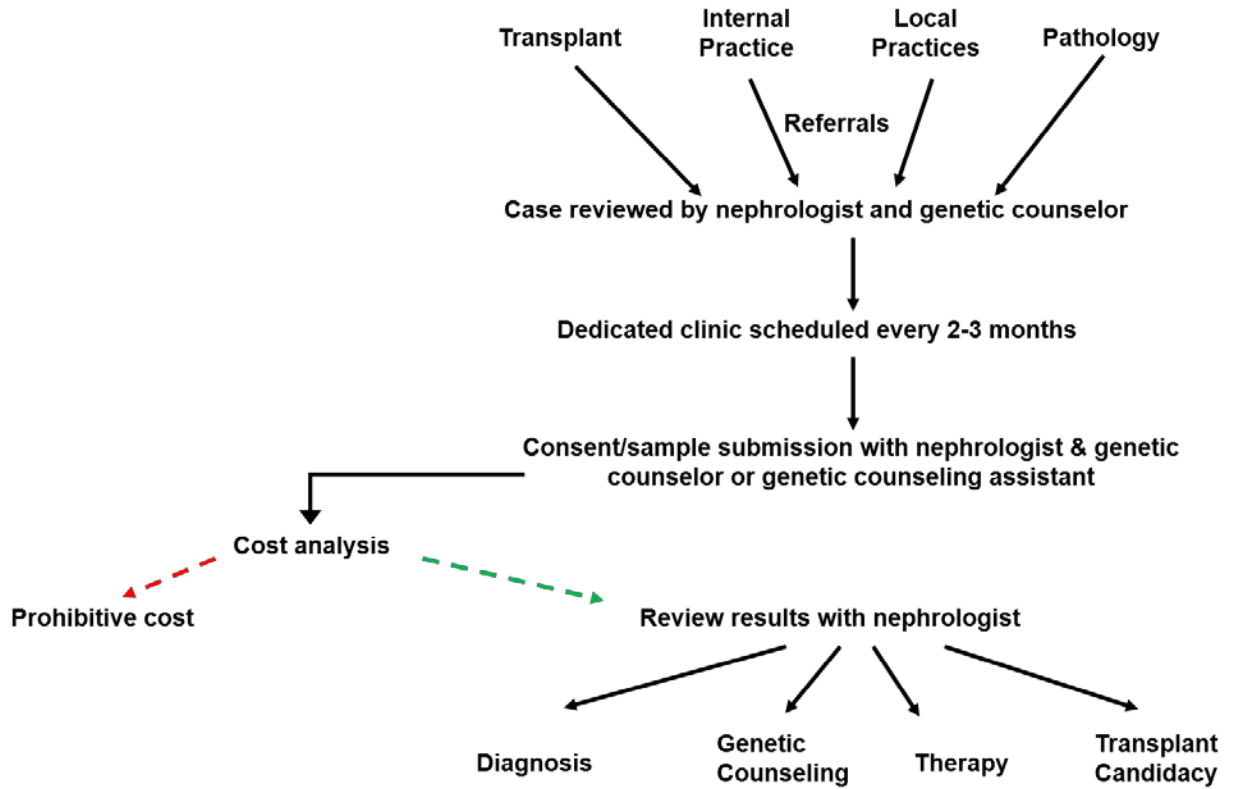
VUS = variant of uncertain significance, HET = heterozygous. Cost is in US dollars.

**Table 3. Summary of patients with negative testing results (N = 5)**

Patient	Family History	Cost to Patient	Indication for testing	Follow up plan
13	No	\$250	Weak	None
14	No	\$0	Moderate	None
15	No	\$0	Moderate	None
16	No	\$0	Moderate	None
17	Multiple	\$0	Strong	Whole exome sequencing

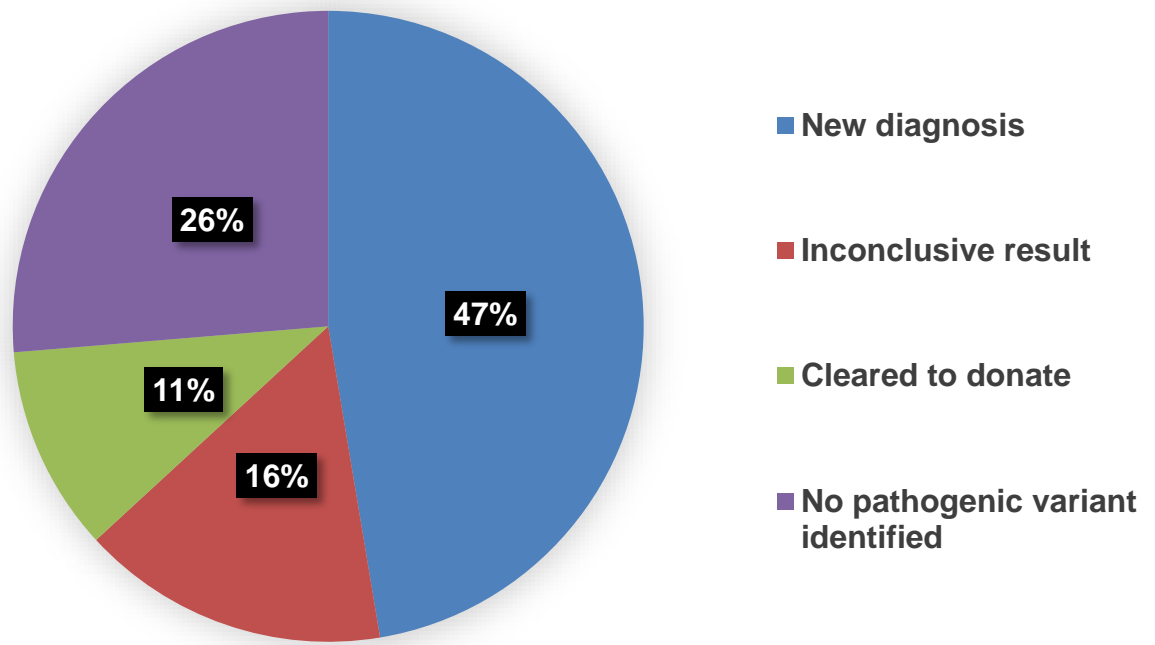
Cost is in US dollars.

**Figure 1.**



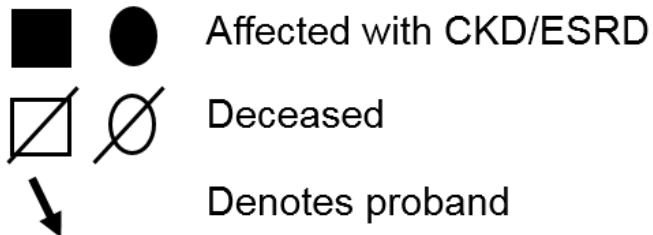
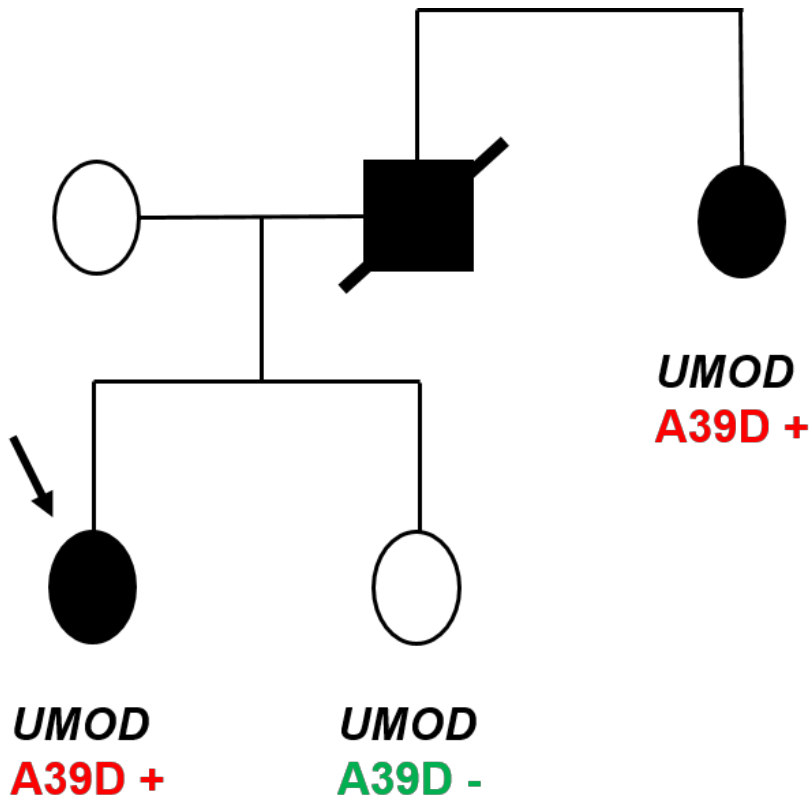
**Figure 1. Renal genetics clinic workflow.** Patients were referred through multiple pathways and cases were reviewed prior to the clinic visit. The commercial testing platform coordinated with the insurance company to determine coverage or cost to the patient. Samples were processed if cost was acceptable to the patient.

**Figure 2.**



**Figure 2. Outcome of sequencing in 19 patients seen in the first year of the renal genetics clinic.** All samples were sent for commercial gene panel testing. Inconclusive results consisted of variants of uncertain significance or a single heterozygous variant in a recessive disease gene. Cleared to donate is a subset of the no pathogenic variant identified category.

Figure 3.



**Figure 3. Family pedigree of a patient with newly diagnosed autosomal dominant interstitial kidney disease.** Additional genetic testing revealed that the proband's paternal aunt with ESRD had the same uromodulin (UMOD) variant, while her sister did not, allowing her sister to be evaluated as a potential kidney donor.